

SERIE

M

2024_LINE_1



Pinze pneumatiche
Pneumatic Grippers

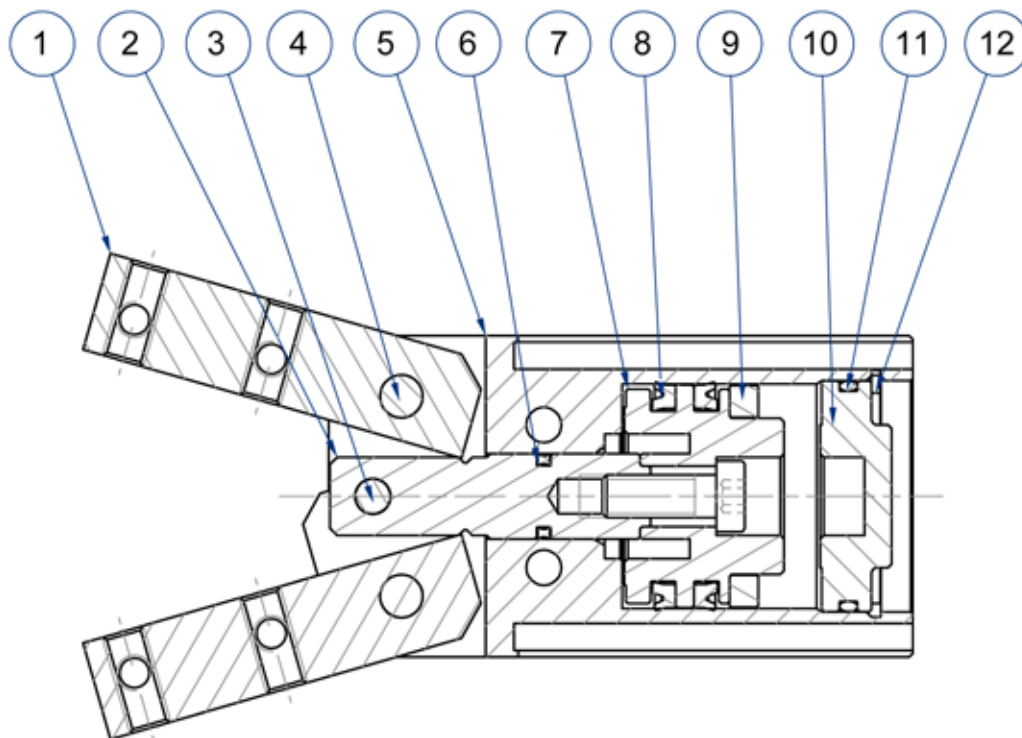


CARATTERISTICHE TECNICHE - TECHNICAL CHARACTERISTICS

Pressione di esercizio <i>Working pressure</i>	max 10 bar
Temperatura di esercizio <i>Working temperature</i>	0 ÷ +80°C (-20°C con aria secca - <i>with dry air</i>)
Versioni - Versions	semplice effetto, doppio effetto - <i>single acting, double acting</i>
Alesaggi - Bores	∅ 16 - 20 - 32 - 50
Fluido - Fluid	aria compressa filtrata, non lubrificata - <i>compressed filtered, non lubricated air</i>

CARATTERISTICHE COSTRUTTIVE - CONSTRUCTIVE CHARACTERISTICS

①	Griffa - Jaw	acciaio temprato - <i>tempered steel</i>
②	Stelo - Rod	acciaio inox AISI 303 - <i>AISI 303 stainless steel</i>
③ ④	Perno - Pin	acciaio temprato - <i>tempered steel</i>
⑤	Corpo - Housing	alluminio anodizzato - <i>anodized aluminium</i>
⑥ ⑧ ⑪	Guarnizioni - Seals	NBR
⑦	Pistone - Piston	alluminio - <i>aluminium</i>
⑨	Magnete - Magnet	plastroferrite - <i>rubber magnet</i>
⑩	Testata - Cover	ottone - <i>brass</i>
⑫	Seeger - Retaining ring	acciaio - <i>steel</i>
	Molla - Spring	acciaio - <i>steel</i>



CHIAVE DI CODIFICA

KEY CODE

M 2 0 D E M

VERSIONE - VERSION

NA	normalmente aperta - molla posteriore <i>normally open - rear spring</i>
NAM	normalmente aperta magnetica - molla posteriore <i>normally open magnetic - rear spring</i>
NC	normalmente chiusa - molla anteriore <i>normally closed - front spring</i>
NCM	normalmente chiusa magnetica - molla anteriore <i>normally closed magnetic - front spring</i>
DE	doppio effetto <i>double acting</i>
DEM	doppio effetto magnetico <i>double acting magnetic</i>
DEP	doppio effetto con perno posteriore <i>double acting with rear pin</i>

ALESAGGIO - BORE (Ø)

016-020-032-050

SERIE - SERIES

M pinza pneumatica ad apertura angolare
pneumatic angular gripper

FORZA TEORICA DI BLOCCAGGIO (P=6bar)

THEORETICAL LOCKING FORCE (P=6bar)

COD.	FORZA DI BLOCCAGGIO [KG] LOCKING FORCE [KG]	PRESSIONE DI ESERCIZIO [BAR] WORKING PRESSURE [BAR]
M16NA - M16NAM	4	2,5 ÷ 10
M16NC - M16NCM	5,2	2,5 ÷ 10
M16DE - M16DEM	5,5 - 6,5	1,5 ÷ 10
M20NA - M20NAM	7,5	2 ÷ 10
M20NC - M20NCM	8,5	2 ÷ 10
M20DE - M20DEM	10,1 - 12,2	1,5 ÷ 10
M32NA - M32NAM	16,5	2 ÷ 10
M32NC - M32NCM	19,5	2 ÷ 10
M32DE - M32DEM	22 - 24	1,5 ÷ 10
M50NAM	46	2 ÷ 10
M50NCM	49	2 ÷ 10
M50DEM	52 - 60	1,5 ÷ 10

La forza di bloccaggio è calcolata alla distanza di 15mm dal fulcro delle griffe; a 30mm per M50.

The locking force is calculated at a distance of 15 mm from the jaws fulcrum; as to M50, the distance is 30mm.

SERIE
M

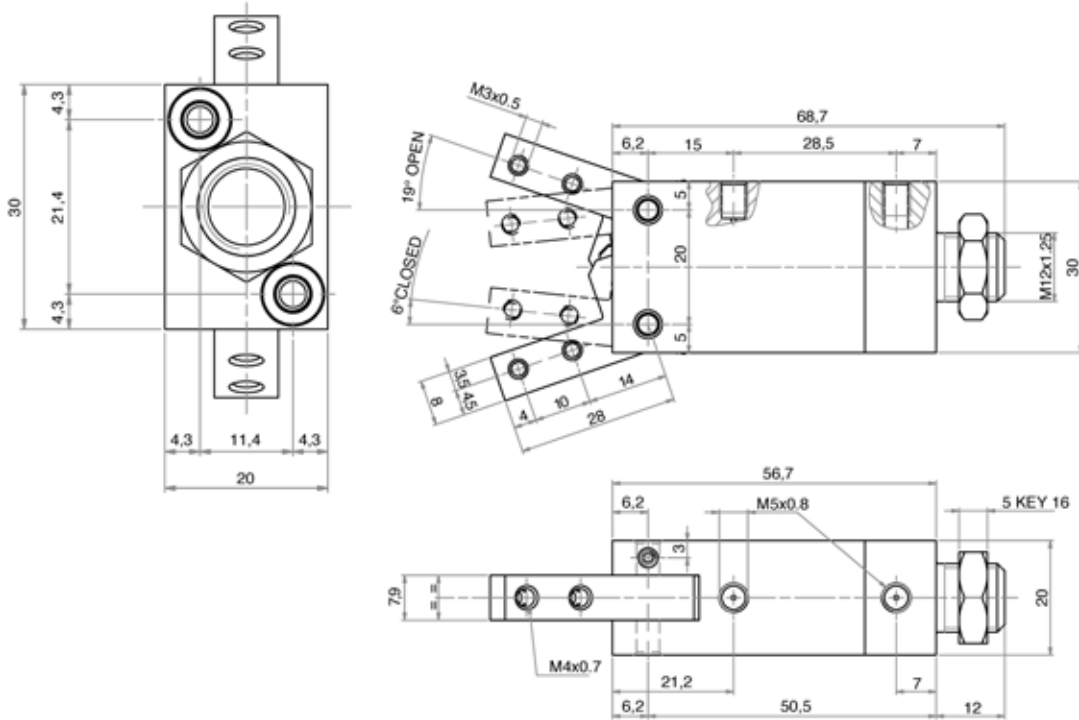
PINZE PNEUMATICHE

M16DE

M16NA

M16NC

PNEUMATIC GRIPPERS



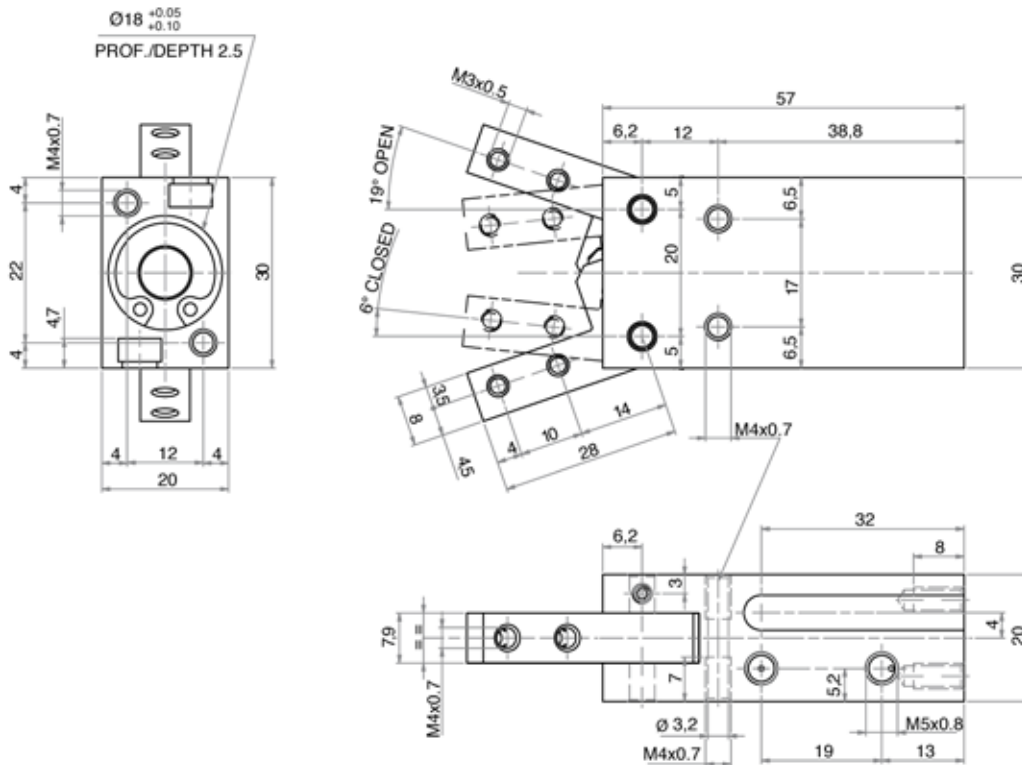
PINZE PNEUMATICHE

M16DEM

M16NAM

M16NCM

PNEUMATIC GRIPPERS

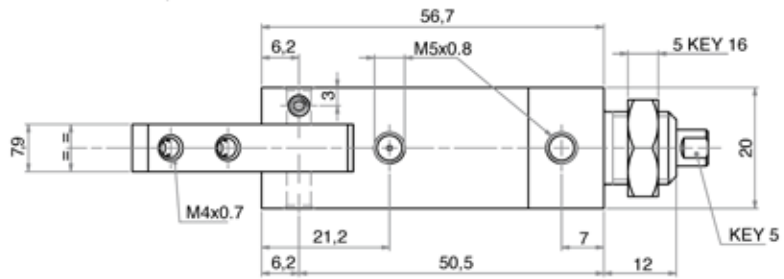
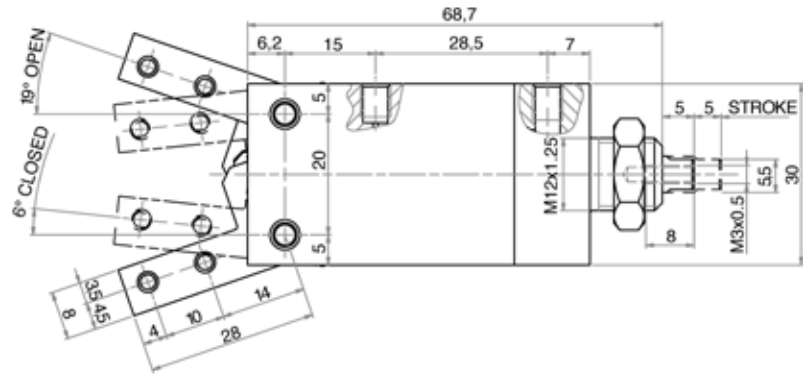
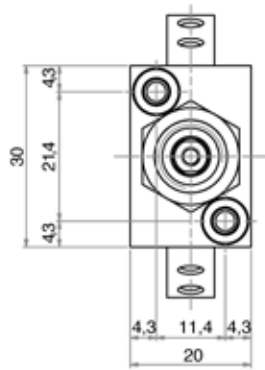


SERIE
M

PINZE PNEUMATICHE

M16DEP

PNEUMATIC GRIPPERS



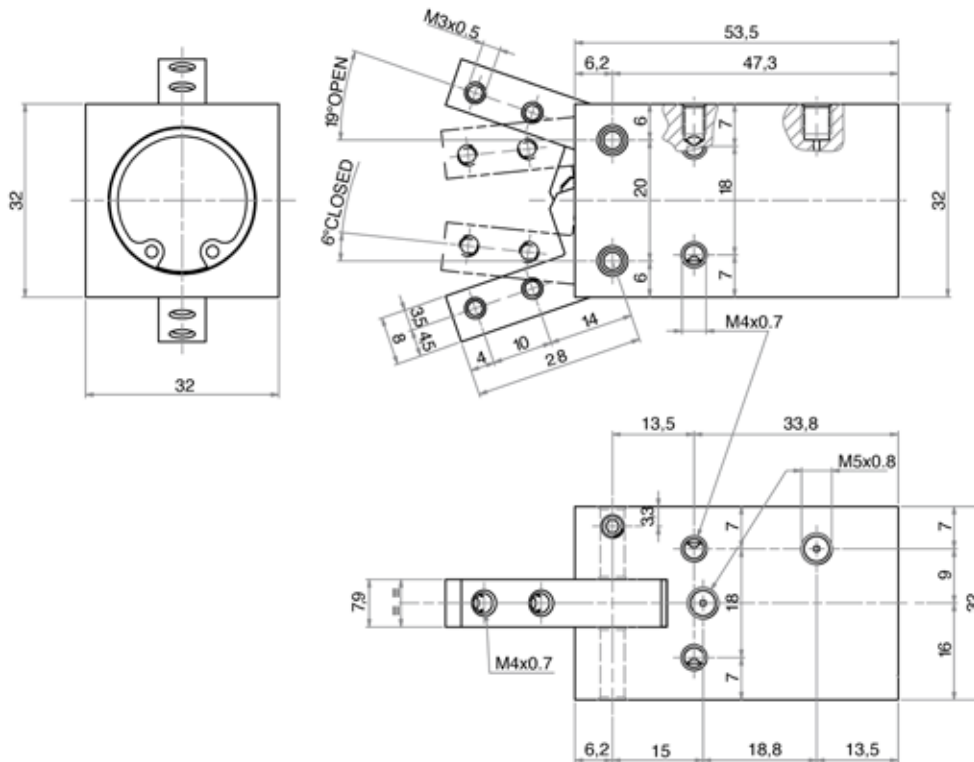
PINZE PNEUMATICHE

M20DE

M20NA

M20NC

PNEUMATIC GRIPPERS



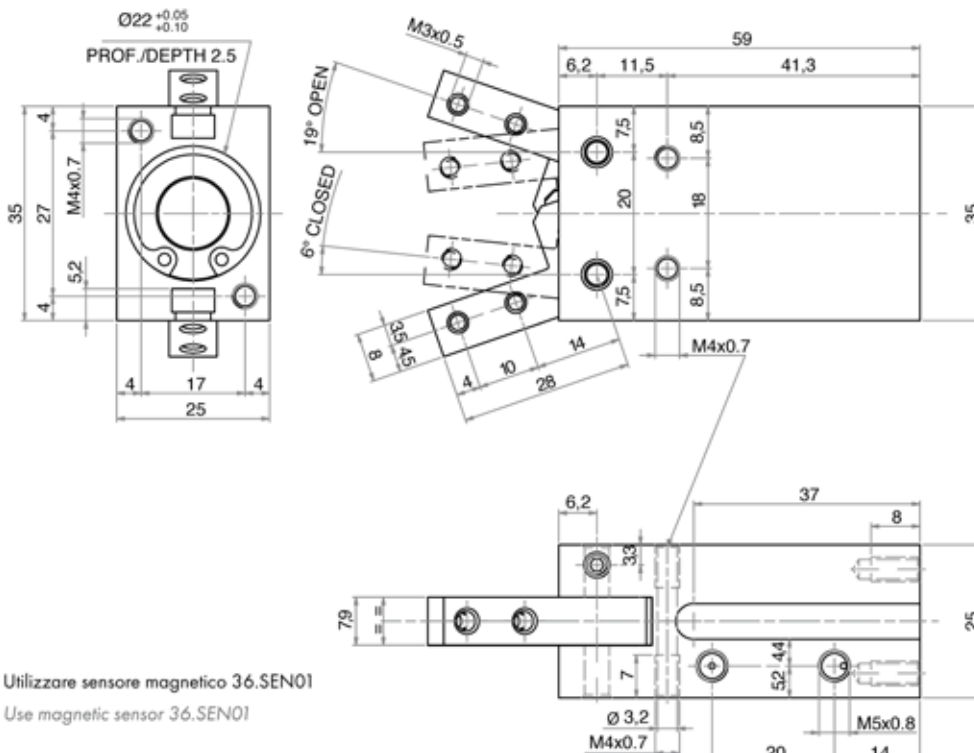
PINZE PNEUMATICHE

M20DEM

M20NAM

M20NCM

PNEUMATIC GRIPPERS



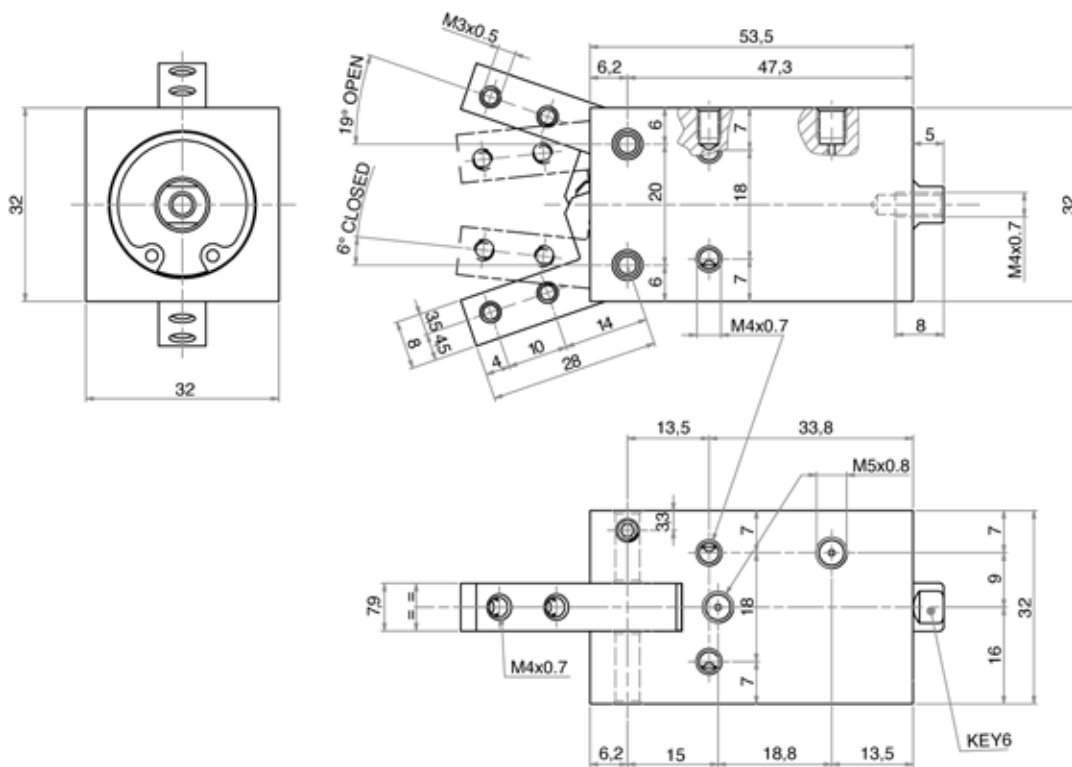
III: Utilizzare sensore magnetico 36.SEN01

III: Use magnetic sensor 36.SEN01

PINZE PNEUMATICHE

M20DEP

PNEUMATIC GRIPPERS



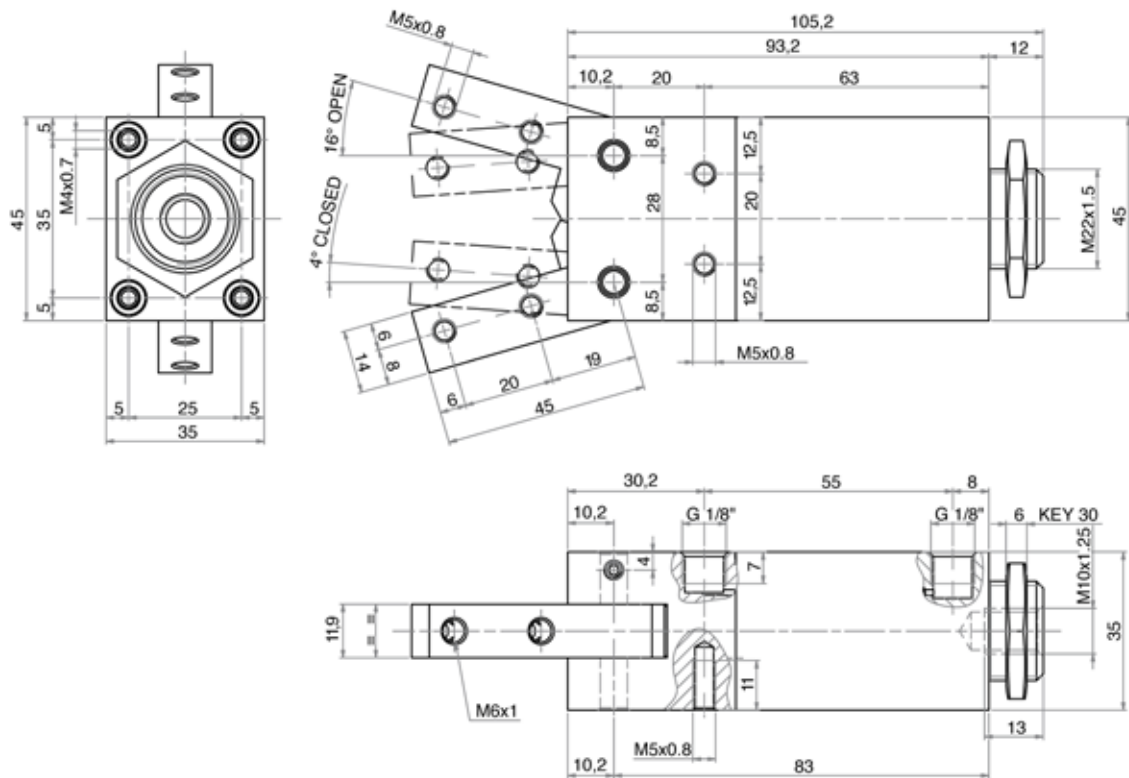
PINZE PNEUMATICHE

M32DE

M32NA

M32NC

PNEUMATIC GRIPPERS



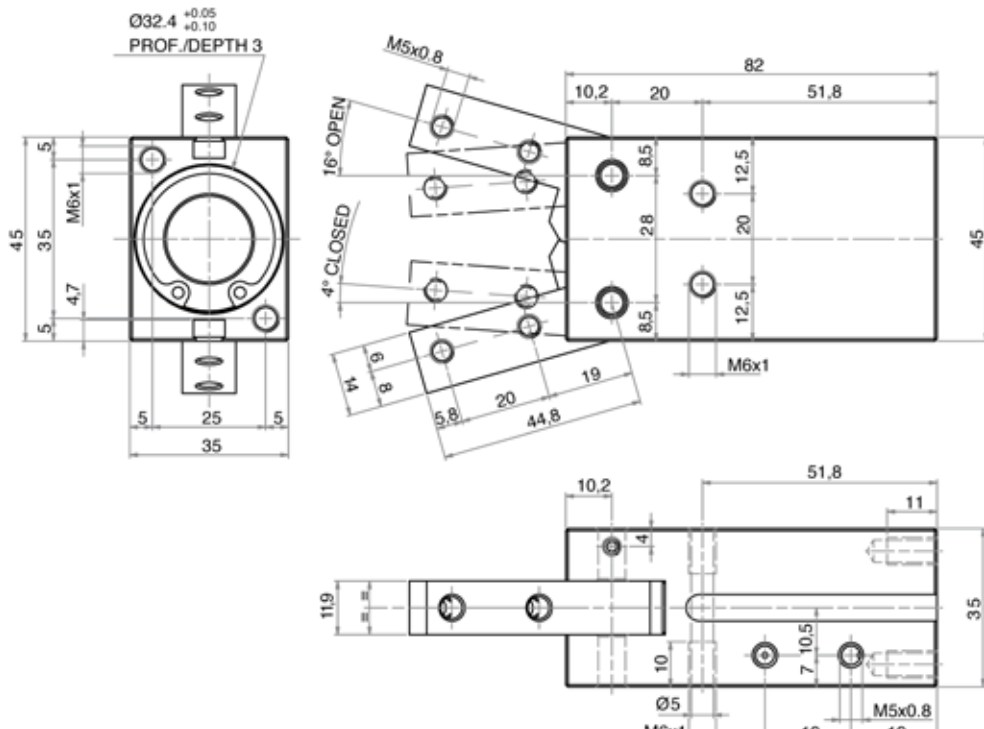
PINZE PNEUMATICHE

M32DEM

M32NAM

M32NCM

PNEUMATIC GRIPPERS

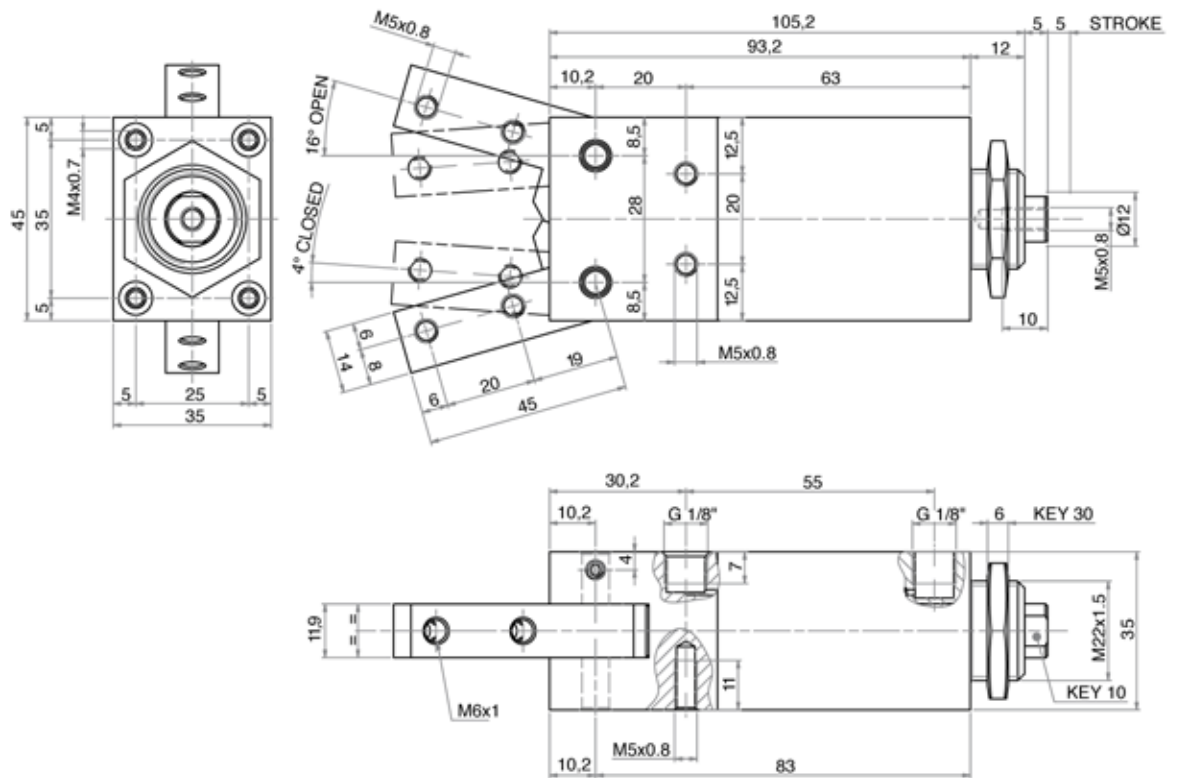


SERIE
M

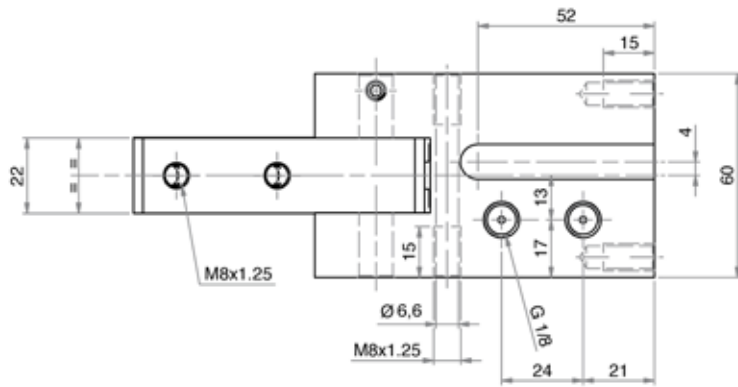
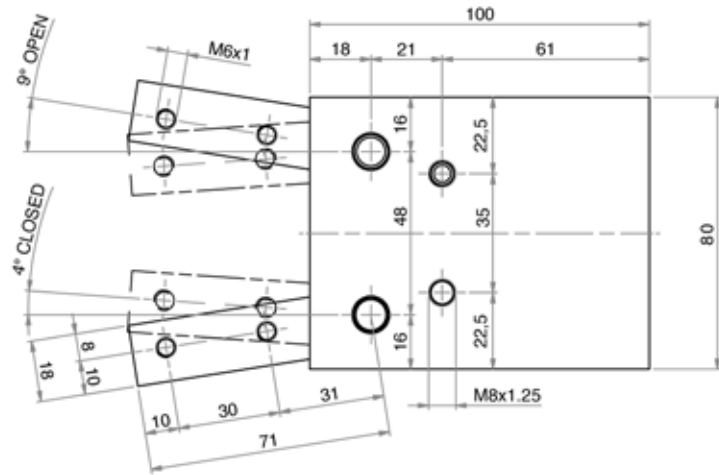
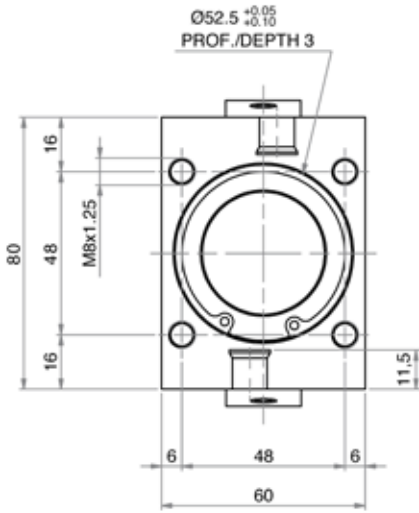
PINZE PNEUMATICHE

M32DEP

PNEUMATIC GRIPPERS



PNEUMATIC GRIPPERS



III: Utilizzare sensore magnetico 36.SEN01
 III: Use magnetic sensor 36.SEN01



Realized and distributed by
Triveneta automazioni s.r.l.
via Carlo Rosselli, 36 - 36061 Bassano del Grappa (VI)
tel. 0424/505152 - fax 0424/505189

www.triveneta.it - www.t3components.com
amministrazione@triveneta.it
sales.manager@triveneta.it
info@t3components.com





TRIVENETA AUTOMAZIONI s.r.l.

Tel. 0424 505152 - Fax 0424 505189

info@t3components.com

www.t3components.com